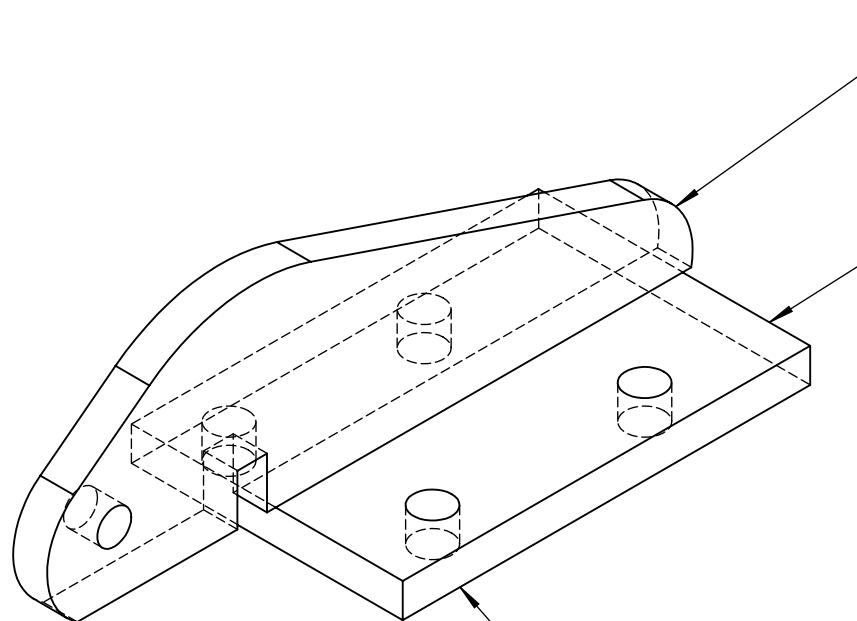


2

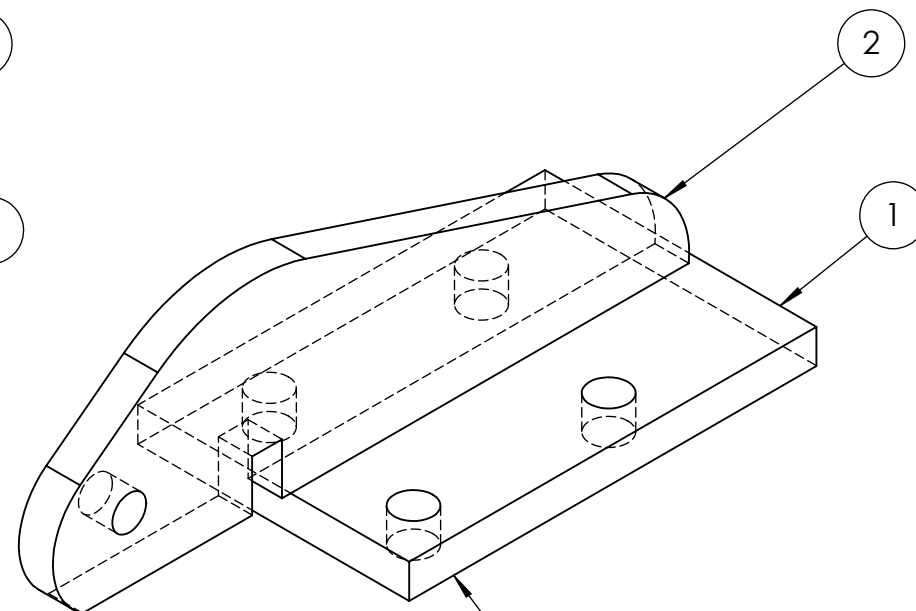
1

ITEM NO.	PART NUMBER	DESCRIPTION	QTY.
1	Bottom Mount Plate	1/2" Steel Plate	2
2	Upper Eye (Driver)	1/2" Steel Plate	1
3	Upper Eye (Passenger)	1/2" Steel Plate	1


Note: JP_0001 Kit Includes (2) Total Assemblies: (1) of Left (Driver) Side and (1) of Right (Passenger) Side



Right (Passenger)
Side Assembly



Left (Driver)
Side Assembly

TITLE / DESCRIPTION			DRAWING NUMBER
Replica Front Tow Eye Kit for YJ (86-95) Jeep			JP_0001
 <p>ALL RIGHTS RESULTING FROM THIS DESIGN ARE RESERVED BY KYTOR INDUSTRIES</p>	DRAWN BY	DATE	REVISION NUMBER
	K. BOTTORFF	02/18/2022	8
	UNLESS OTHERWISE SPECIFIED:	SCALE	WEIGHT
	DIMENSIONS ARE IN INCHES	1:4	11.6 lbs.
	TOLERANCES:	SHEET SIZE	MATERIAL
	X.XX ± .1"	A	1/2" Steel
	X.XXX ± .03"		
	X.XXX ± .005"		
	FRACTIONAL ± 1/16"	SHEET	FINISH
	ANGULAR ± 1 DEG	1 OF 6	Unfinished

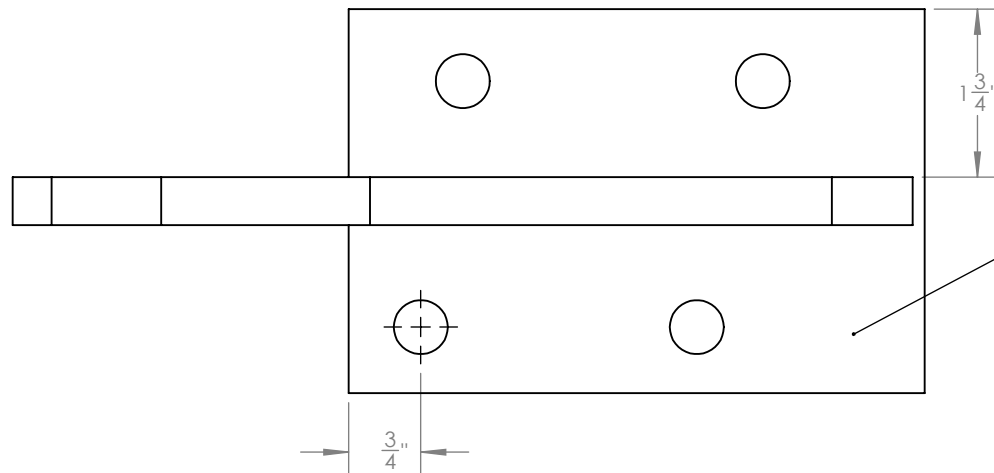
2

1

2

1

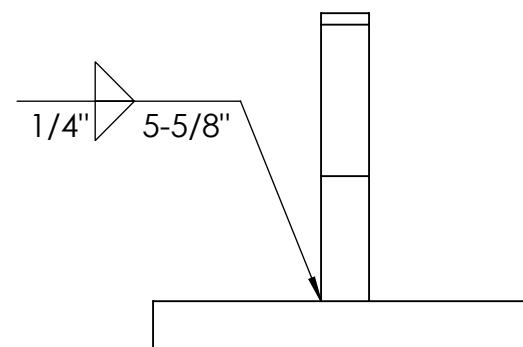
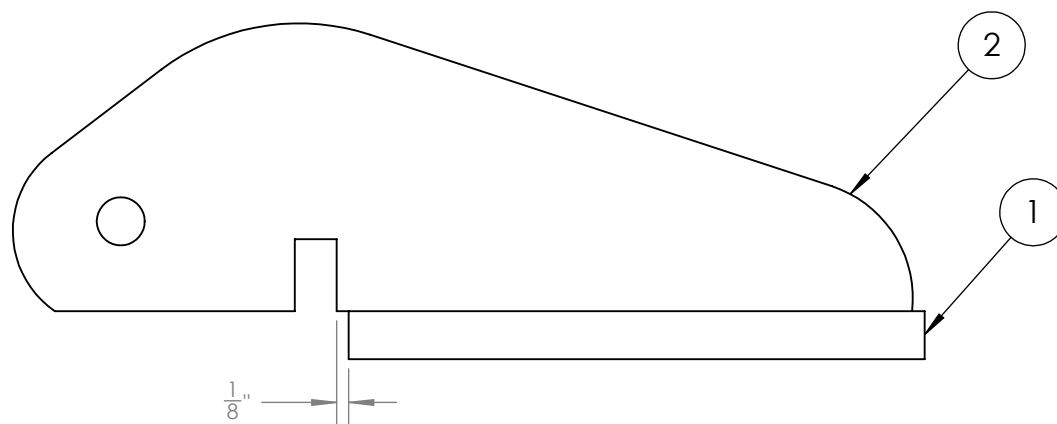
#	PART NUMBER	DESCRIPTION	QTY.
1	Bottom Mount Plate	1/2" Steel Plate	1
2	Upper Eye (Driver)	1/2" Steel Plate	1



Notes:

1. Bottom plate orientation varies by side.
2. Verify bottom plate orientation prior to weld.
3. Fillet weld tee joint along both sides.

Left (Driver) Side Welded Assembly



TITLE / DESCRIPTION

Replica Front Tow Eye Kit for YJ (86-95) Jeep

DRAWING NUMBER

JP_0001

ALL RIGHTS RESULTING FROM THIS DESIGN
ARE RESERVED BY KYTOR INDUSTRIES

DRAWN BY

K. BOTTORFF

DATE

02/18/2022

REVISION NUMBER

8

UNLESS OTHERWISE SPECIFIED:

SCALE

WEIGHT

5.8 lbs.

DIMENSIONS ARE IN INCHES

1:4

TOLERANCES:

X.XX ± .1"

X.XXX ± .03"

X.XXX ± .005"

FRACTIONAL ± 1/16"

ANGULAR ± 1 DEG

SHEET SIZE

MATERIAL

1/2" Steel

SHEET

FINISH

2 OF 6

Unfinished

2

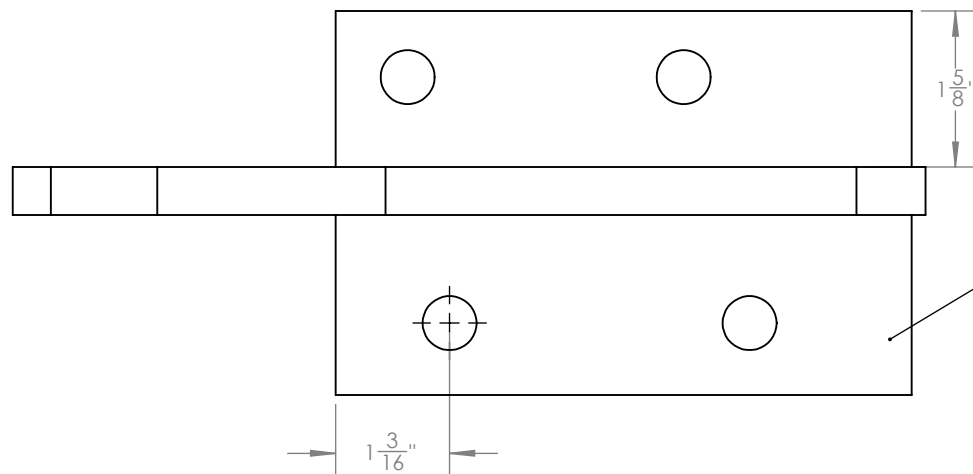
1

2

1

#	PART NUMBER	DESCRIPTION	QTY.
1	Bottom Mount Plate	1/2" Steel Plate	1
3	Upper Eye (Passenger)	1/2" Steel Plate	1

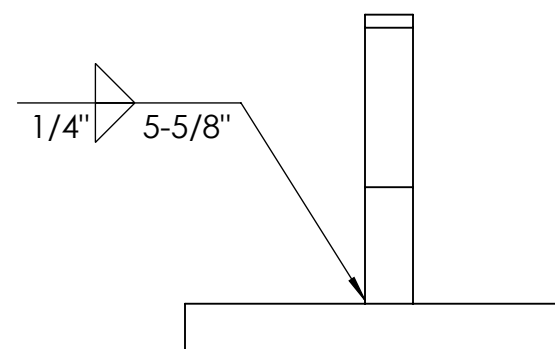
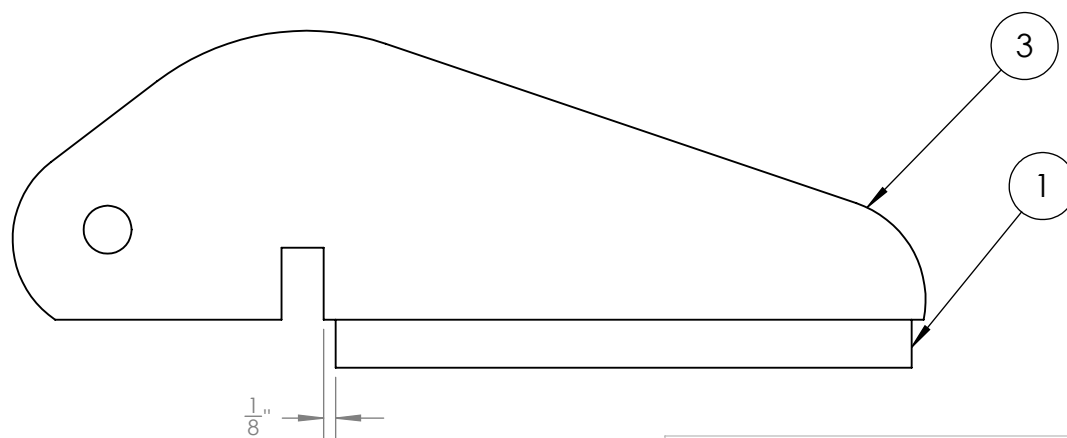
B




Notes:

1. Bottom plate orientation varies by side.
2. Verify bottom plate orientation prior to weld.
3. Fillet weld tee joint along both sides.

Right (Passenger) Side Welded Assembly



A

TITLE / DESCRIPTION			DRAWING NUMBER
Replica Front Tow Eye Kit for YJ (86-95) Jeep			JP_0001
 <p>ALL RIGHTS RESULTING FROM THIS DESIGN ARE RESERVED BY KYTOR INDUSTRIES</p>	DRAWN BY	DATE	REVISION NUMBER
	K. BOTTORFF	02/18/2022	8
	UNLESS OTHERWISE SPECIFIED:	SCALE	WEIGHT
	DIMENSIONS ARE IN INCHES	1:4	5.8 lbs.
	TOLERANCES:	SHEET SIZE	MATERIAL
	X.XX ± .1"	A	1/2" Steel
	X.XXX ± .03"		
	X.XXX ± .005"		
	FRACTIONAL ± 1/16"	SHEET	FINISH
	ANGULAR ± 1 DEG	3 OF 6	Unfinished

B

A

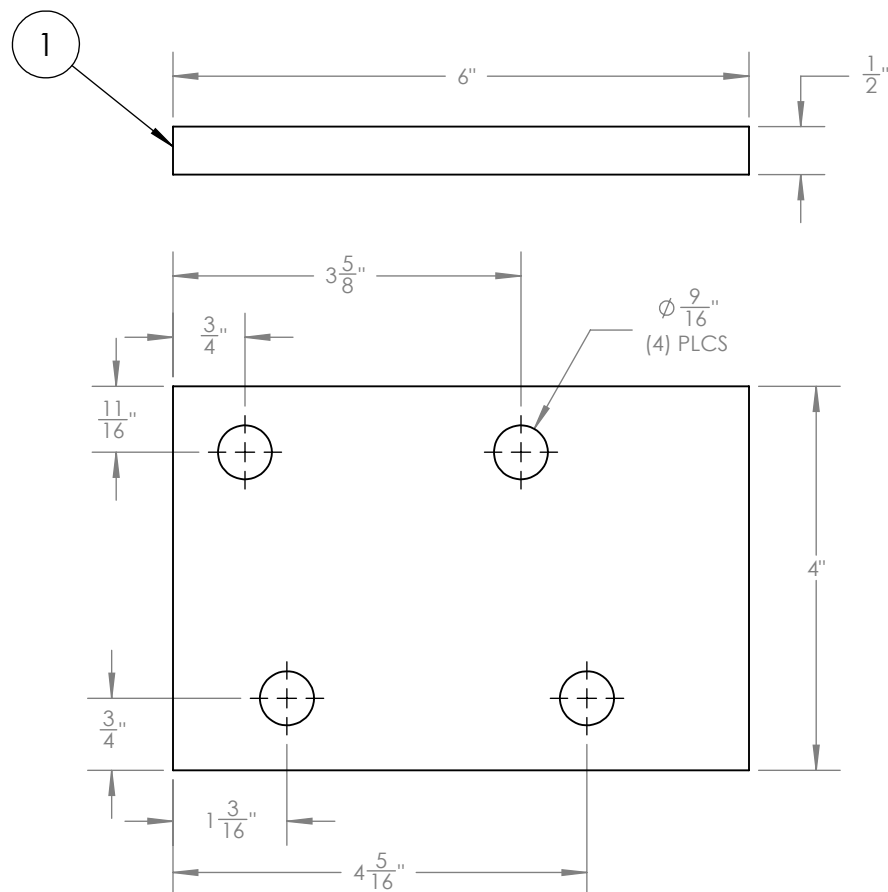
2


1

2

1

ITEM NO.	PART NUMBER	DESCRIPTION	QTY.
1	Bottom Mount Plate	1/2" Steel Plate	2



TITLE / DESCRIPTION		DRAWING NUMBER	
Replica Front Tow Eye Kit for YJ (86-95) Jeep		JP_0001	
 <p>ALL RIGHTS RESULTING FROM THIS DESIGN ARE RESERVED BY KYTOR INDUSTRIES</p>	DRAWN BY	DATE	REVISION NUMBER
	K. BOTTORFF	02/18/2022	8
	UNLESS OTHERWISE SPECIFIED:	SCALE	WEIGHT
	DIMENSIONS ARE IN INCHES	1:2	3.0 lbs.
TOLERANCES: X.XX ± .1" X.XXX ± .03" X.XXX ± .005" FRACTIONAL ± 1/16" ANGULAR ± 1 DEG	SHEET SIZE	A	MATERIAL
			1/2" Steel
	SHEET	4 OF 6	FINISH
			Unfinished

2

1

B

B

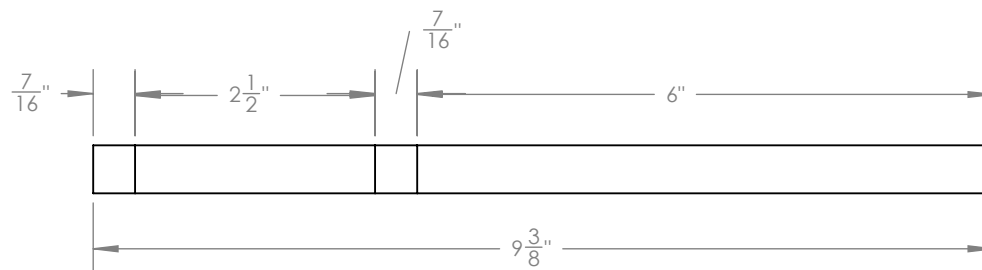
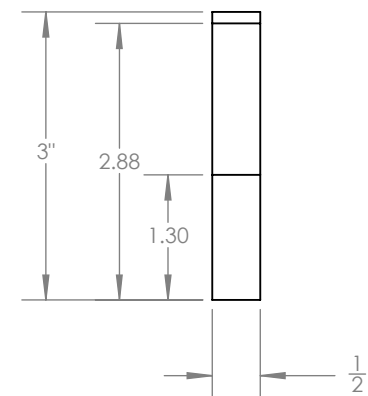
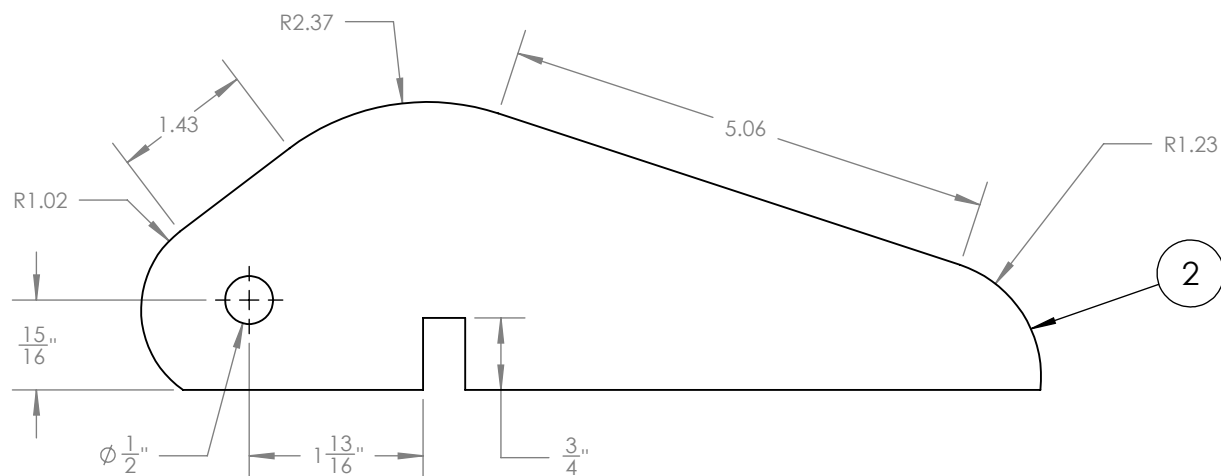
A


A

2

1

ITEM NO.	PART NUMBER	DESCRIPTION	QTY.
2	Upper Eye (Driver)	1/2" Steel Plate	1



TITLE / DESCRIPTION		DRAWING NUMBER	
Replica Front Tow Eye Kit for YJ (86-95) Jeep		JP_0001	
 <p>ALL RIGHTS RESULTING FROM THIS DESIGN ARE RESERVED BY KYTOR INDUSTRIES</p>	DRAWN BY	DATE	REVISION NUMBER
	K. BOTTORFF	02/18/2022	8
	UNLESS OTHERWISE SPECIFIED:	SCALE	WEIGHT
	DIMENSIONS ARE IN INCHES	1:2	2.8 lbs.
TOLERANCES: X.XX ± .1" X.XXX ± .03" X.XXX ± .005" FRACTIONAL ± 1/16" ANGULAR ± 1 DEG	SHEET SIZE	A	MATERIAL
	SHEET	5 OF 6	1/2" Steel
		FINISH	
		Unfinished	

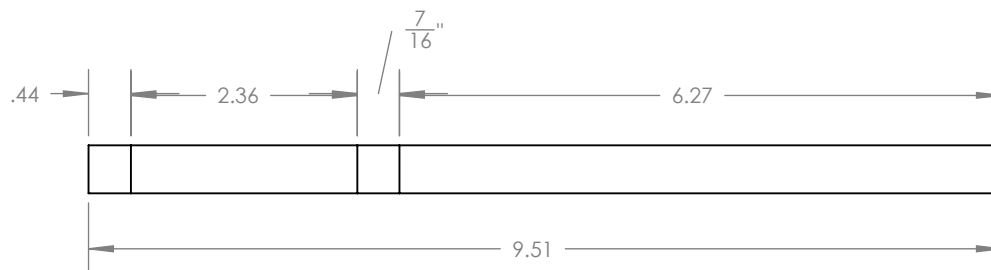
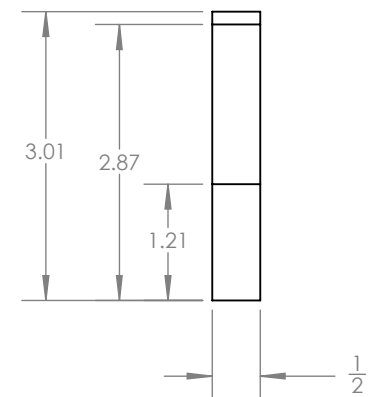
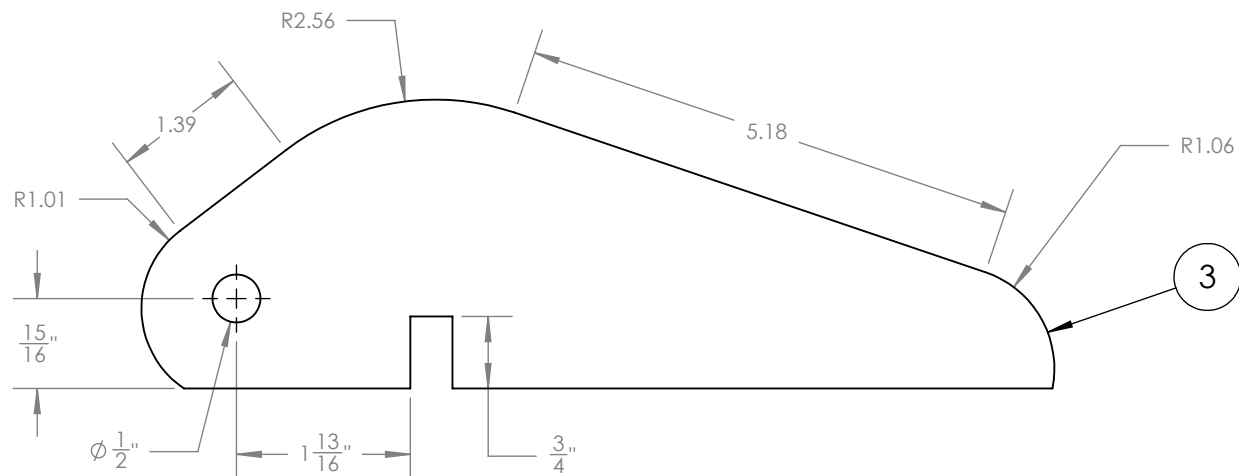
2


1

2

1

ITEM NO.	PART NUMBER	DESCRIPTION	QTY.
3	Upper Eye (Passenger)	1/2" Steel Plate	1



TITLE / DESCRIPTION		DRAWING NUMBER	
Replica Front Tow Eye Kit for YJ (86-95) Jeep		JP_0001	
 <p>ALL RIGHTS RESULTING FROM THIS DESIGN ARE RESERVED BY KYTOR INDUSTRIES</p>	DRAWN BY	DATE	REVISION NUMBER
	K. BOTTORFF	02/18/2022	8
	UNLESS OTHERWISE SPECIFIED:	SCALE	WEIGHT
	DIMENSIONS ARE IN INCHES	1:2	2.8 lbs.
TOLERANCES: X.XX ± .1" X.XXX ± .03" X.XXX ± .005" FRACTIONAL ± 1/16" ANGULAR ± 1 DEG	SHEET SIZE	A	MATERIAL
	SHEET	6 OF 6	1/2" Steel
		FINISH	Unfinished

2

1